



KOINAA®

Choose Confidently



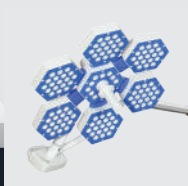
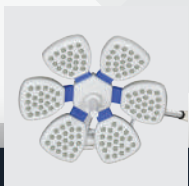
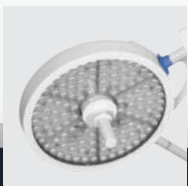
SURGICAL
LED LIGHTS



SURGICAL
TABLES



EXAMINATION
LIGHTS



INDEX

OMEGA

Series

1

NOVA

Series

3-9

HEX

Series

10-16

HEX CT

Series

17-21

SIGMA

Series

22-24

EXAMINATION

Lights

25-26

OT TABLES

Surgical / Ophthalmic / Gynae
/ Animal / Derma Chair

27-46

ACCESSORIES

Standard / Optional

47-48



OMEGA 500+500

Adjustable Colour Temperature

Special Features

Shadowless Light, Memory Function, High quality sterilizable handle, With protective fire resistant ESG safety glass for scratch proof, fast disinfection process, protects UV and IR rays and improve light penetration. Body is made of high quality fire resistant polymer.

Single non winged round shape lamp head for easy maintenance and better sealing against dust and fumigation.

OPTIONAL: BATTERY BACKUP 



ULTRA-THIN
LED DOME

Optional 360° Rotation

M Memory Function

E Endo Mode

Technical Data

Intensity	1,60,000 + 1,60,000 Lux ±10%
Size of Light Field	12-30 cm
Colour Temperature	4000-5000 K
Colour Rendering Index	93 RA
LED Life	>50000 Hrs.
Number of LED	126 +126
Diameter of Light	500mm x 2
Brightness Control	Capacitive Touch Panel
Power Supply	220V/50Hz AC
Colour of LED	White & Yellow (Double Colour)
Focusing	Adjustable
Monitor / Camera	Optional

OMEGA 500

Adjustable Colour Temperature

Special Features

Shadowless Light, Memory Function, High quality sterilizable handle, With protective fire resistant ESG safety glass for scratch proof, fast disinfection process, protects UV and IR rays and improve light penetration. Body is made of high quality fire resistant polymer.

Single non winged round shape lamp head for easy maintenance and better sealing against dust and fumigation.

OPTIONAL: BATTERY BACKUP 



Optional 360° Rotation

M Memory Function

E Endo Mode

Technical Data

Intensity	1,60,000 ±10%
Size of Light Field	12-30 cm
Colour Temperature	4000-5000 K
Colour Rendering Index	93 RA
LED Life	>50000 Hrs.
Number of LED	126
Diameter of Light	500mm
Brightness Control	Capacitive Touch Panel
Power Supply	220V/50Hz AC
Colour of LED	White & Yellow (Double Colour)
Focusing	Adjustable
Monitor / Camera	Optional



Mobile Model

Mobile Model
with battery backup

OMEGA 200+200

Special Features

Shadowless Light, Body is made of high quality fire resistant polymer.

Single non winged round shape lamp head for easy maintenance and better sealing against dust and fumigation.

OPTIONAL: BATTERY BACKUP



Technical Data

Intensity	80,000 + 80,000 Lux \pm 10%
Size of Light Field	15 cm
Colour Temperature	4500 K
Colour Rendering Index	93 RA
LED Life	>50000 Hrs.
Number of LED	28 +28
Diameter of Light	200mm x 2
Brightness Control	Capacitive Touch Panel
Power Supply	220V/50Hz AC
Colour of LED	White
Focusing	Fixed

OMEGA 200

Special Features

Shadowless Light, Body is made of high quality fire resistant polymer.

Single non winged round shape lamp head for easy maintenance and better sealing against dust and fumigation.

OPTIONAL: BATTERY BACKUP



Technical Data

Intensity	80,000 \pm 10%
Size of Light Field	15 cm
Colour Temperature	4500 K
Colour Rendering Index	93 RA
LED Life	>50000 Hrs.
Number of LED	28
Diameter of Light	200mm
Brightness Control	Capacitive Touch Panel
Power Supply	220V/50Hz AC
Colour of LED	White
Focusing	Fixed



Mobile Model

Mobile Model
with battery backup

KMI NOVA 6+6

Adjustable Colour Temperature

Special Features

Shadowless Light, Memory Function, High quality sterilizable handle. With special European design for ventilation of heat. Body is made of high quality fire resistant polymer.

OPTIONAL: BATTERY BACKUP 

Technical Data

Intensity	1,60,000 + 1,60,000 Lux \pm 10%
Size of Light Field	12-30 cm
Colour Temperature	4000-5000 K
Colour Rendering Index	93 RA
LED Life	>50000 Hrs.
Number of LED	126 +126
Diameter of Light	600mm x 2
Brightness Control	Capacitive Touch Panel
Power Supply	220V/50Hz AC
Colour of LED	White & Yellow (Double Colour)
Focusing	Adjustable



Optional 360° Rotation

M Memory Function

E Endo Mode

KMI NOVA 6+5

Adjustable Colour Temperature

Special Features

Shadowless Light, Memory Function, High quality sterilizable handle. With special European design for ventilation of heat. Body is made of high quality fire resistant polymer.

OPTIONAL: BATTERY BACKUP 

Technical Data

Intensity	1,60,000 + 1,40,000 Lux \pm 10%
Size of Light Field	12-30 cm
Colour Temperature	4000-5000 K
Colour Rendering Index	93 RA
LED Life	>50000 Hrs.
Number of LED	126+105
Diameter of Light	600mm x 2
Brightness Control	Capacitive Touch Panel
Power Supply	220V/50Hz AC
Colour of LED	White & Yellow (Double Colour)
Focusing	Adjustable



M Memory Function

E Endo Mode

KMI NOVA 6+4

Adjustable Colour Temperature

Special Features

Shadowless Light, Memory Function, High quality sterilizable handle. With special European design for ventilation of heat. Body is made of high quality fire resistant polymer.

OPTIONAL: BATTERY BACKUP



Technical Data

Intensity	1,60,000 + 1,30,000 Lux ±10%
Size of Light Field	12-30 cm
Colour Temperature	4000-5000 K
Colour Rendering Index	93 RA
LED Life	>50000 Hrs.
Number of LED	126 + 84
Diameter of Light	600mm x 2
Brightness Control	Capacitive Touch Panel
Power Supply	220V/50Hz AC
Colour of LED	White & Yellow (Double Colour)
Focusing	Adjustable



M Memory Function

E Endo Mode

KMI NOVA 6+3

Adjustable Colour Temperature

Special Features

Shadowless Light, Memory Function, High quality sterilizable handle. With special European design for ventilation of heat. Body is made of high quality fire resistant polymer.

OPTIONAL: BATTERY BACKUP



Technical Data

Intensity	1,60,000 + 1,00,000 Lux ±10%
Size of Light Field	12-30 cm
Colour Temperature	4000-5000 K
Colour Rendering Index	93 RA
LED Life	>50000 Hrs.
Number of LED	126 + 63
Diameter of Light	600mm x 2
Brightness Control	Capacitive Touch Panel
Power Supply	220V/50Hz AC
Colour of LED	White & Yellow (Double Colour)
Focusing	Adjustable



M Memory Function

E Endo Mode

KMI NOVA 5+5

Adjustable Colour Temperature

Special Features

Shadowless Light, Memory Function, High quality sterilizable handle. With special European design for ventilation of heat. Body is made of high quality fire resistant polymer.

OPTIONAL: BATTERY BACKUP



Technical Data

Intensity	1,40,000 + 1,40,000 Lux \pm 10%
Size of Light Field	12-30 cm
Colour Temperature	4000-5000 K
Colour Rendering Index	93 RA
LED Life	>50000 Hrs.
Number of LED	105 + 105
Diameter of Light	600mm x 2
Brightness Control	Capacitive Touch Panel
Power Supply	220V/50Hz AC
Colour of LED	White & Yellow (Double Colour)
Focusing	Adjustable

M Memory Function

E Endo Mode

KMI NOVA 5+4

Adjustable Colour Temperature

Special Features

Shadowless Light, Memory Function, High quality sterilizable handle. With special European design for ventilation of heat. Body is made of high quality fire resistant polymer.

OPTIONAL: BATTERY BACKUP



Technical Data

Intensity	1,40,000 + 1,30,000 Lux \pm 10%
Size of Light Field	12-30 cm
Colour Temperature	4000-5000 K
Colour Rendering Index	93 RA
LED Life	>50000 Hrs.
Number of LED	105 + 84
Diameter of Light	600mm x 2
Brightness Control	Capacitive Touch Panel
Power Supply	220V/50Hz AC
Colour of LED	White & Yellow (Double Colour)
Focusing	Adjustable

M Memory Function

E Endo Mode

KMI NOVA 5+3

Adjustable Colour Temperature

Special Features

Shadowless Light, Memory Function, High quality sterilizable handle. With special European design for ventilation of heat. Body is made of high quality fire resistant polymer.

OPTIONAL: BATTERY BACKUP



Technical Data

Intensity	1,40,000 + 1,00,000 Lux ±10%
Size of Light Field	12-30 cm
Colour Temperature	4000-5000 K
Colour Rendering Index	93 RA
LED Life	>50000 Hrs.
Number of LED	105 + 63
Diameter of Light	600mm x 2
Brightness Control	Capacitive Touch Panel
Power Supply	220V/50Hz AC
Colour of LED	White & Yellow (Double Colour)
Focusing	Adjustable



M Memory Function

E Endo Mode

KMI NOVA 4+4

Adjustable Colour Temperature

Special Features

Shadowless Light, Memory Function, High quality sterilizable handle. With special European design for ventilation of heat. Body is made of high quality fire resistant polymer.

OPTIONAL: BATTERY BACKUP



Technical Data

Intensity	1,30,000 + 1,30,000 Lux ±10%
Size of Light Field	12-30 cm
Colour Temperature	4000-5000 K
Colour Rendering Index	93 RA
LED Life	>50000 Hrs.
Number of LED	84 + 84
Diameter of Light	600mm x 2
Brightness Control	Capacitive Touch Panel
Power Supply	220V/50Hz AC
Colour of LED	White & Yellow (Double Colour)
Focusing	Adjustable



M Memory Function

E Endo Mode

KMI NOVA 4+3

Adjustable Colour Temperature

Special Features

Shadowless Light, Memory Function, High quality sterilizable handle. With special European design for ventilation of heat. Body is made of high quality fire resistant polymer.

OPTIONAL: BATTERY BACKUP



Technical Data

Intensity	1,30,000 + 1,00,000 Lux \pm 10%
Size of Light Field	12-30 cm
Colour Temperature	4000-5000 K
Colour Rendering Index	93 RA
LED Life	>50000 Hrs.
Number of LED	84 + 63
Diameter of Light	600mm x 2
Brightness Control	Capacitive Touch Panel
Power Supply	220V/50Hz AC
Colour of LED	White & Yellow (Double Colour)
Focusing	Adjustable



M Memory Function

E Endo Mode

KMI NOVA 3+3

Adjustable Colour Temperature

Special Features

Shadowless Light, Memory Function, High quality sterilizable handle. With special European design for ventilation of heat. Body is made of high quality fire resistant polymer.

OPTIONAL: BATTERY BACKUP



Technical Data

Intensity	1,00,000 + 1,00,000 Lux \pm 10%
Size of Light Field	12-30 cm
Colour Temperature	4000-5000 K
Colour Rendering Index	93 RA
LED Life	>50000 Hrs.
Number of LED	63 + 63
Diameter of Light	600mm x 2
Brightness Control	Capacitive Touch Panel
Power Supply	220V/50Hz AC
Colour of LED	White & Yellow (Double Colour)
Focusing	Adjustable



M Memory Function

E Endo Mode

KMI NOVA 6

Adjustable Colour Temperature

Special Features

Shadowless Light, Memory Function, High quality sterilizable handle. With special European design for ventilation of heat. Body is made of high quality fire resistant polymer.

OPTIONAL: BATTERY BACKUP 



M Memory Function

E Endo Mode

Technical Data

Intensity	1,60,000 Lux \pm 10%
Size of Light Field	12-30 cm
Colour Temperature	4000-5000 K
Colour Rendering Index	93 RA
LED Life	>50000 Hrs.
Number of LED	126
Diameter of Light	600mm
Brightness Control	Capacitive Touch Panel
Power Supply	220V/50Hz AC
Colour of LED	White & Yellow (Double Colour)
Focusing	Adjustable



Mobile Model

Mobile Model
with battery backup

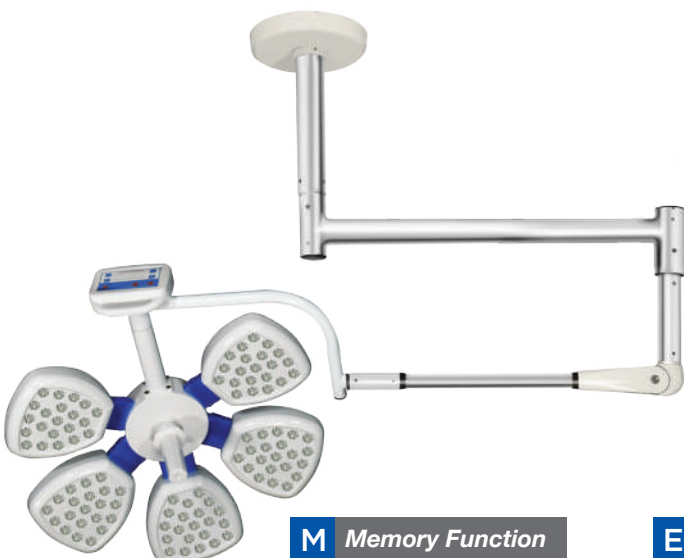
KMI NOVA 5

Adjustable Colour Temperature

Special Features

Shadowless Light, Memory Function, High quality sterilizable handle. With special European design for ventilation of heat. Body is made of high quality fire resistant polymer.

OPTIONAL: BATTERY BACKUP 



M Memory Function

E Endo Mode

Technical Data

Intensity	1,40,000 Lux \pm 10%
Size of Light Field	12-30 cm
Colour Temperature	4000-5000 K
Colour Rendering Index	93 RA
LED Life	>50000 Hrs.
Number of LED	105
Diameter of Light	600mm
Brightness Control	Capacitive Touch Panel
Power Supply	220V/50Hz AC
Colour of LED	White & Yellow (Double Colour)
Focusing	Adjustable



Mobile Model

Mobile Model
with battery backup

KMI NOVA 4

Adjustable Colour Temperature

Special Features

Shadowless Light, Memory Function, High quality sterilizable handle. With special European design for ventilation of heat. Body is made of high quality fire resistant polymer.

OPTIONAL: BATTERY BACKUP 



M Memory Function

E Endo Mode

Technical Data

Intensity	1,30,000 Lux $\pm 10\%$
Size of Light Field	12-30 cm
Colour Temperature	4000-5000 K
Colour Rendering Index	93 RA
LED Life	>50000 Hrs.
Number of LED	84
Diameter of Light	600mm
Brightness Control	Capacitive Touch Panel
Power Supply	220V/50Hz AC
Colour of LED	White & Yellow (Double Colour)
Focusing	Adjustable



Mobile Model



Mobile Model
with battery backup

KMI NOVA 3

Adjustable Colour Temperature

Special Features

Shadowless Light, Memory Function, High quality sterilizable handle. With special European design for ventilation of heat. Body is made of high quality fire resistant polymer.

OPTIONAL: BATTERY BACKUP 



M Memory Function

E Endo Mode

Technical Data

Intensity	1,00,000 Lux $\pm 10\%$
Size of Light Field	12-30 cm
Colour Temperature	4000-5000 K
Colour Rendering Index	93 RA
LED Life	>50000 Hrs.
Number of LED	63
Diameter of Light	600mm
Brightness Control	Capacitive Touch Panel
Power Supply	220V/50Hz AC
Colour of LED	White & Yellow (Double Colour)
Focusing	Adjustable



Mobile Model



Mobile Model
with battery backup

KMI HEX 126+126

Adjustable Colour Temperature

Special Features

Shadowless Light, Memory Function, High quality sterilizable handle, With protective fire resistant ESG safety glass for scratch proof, fast disinfection process, protects UV and IR rays and improve light penetration. With special European design for ventilation of heat. Body is made of high quality fire resistant polymer.

OPTIONAL: BATTERY BACKUP



Technical Data

Intensity	1,60,000 + 1,60,000 Lux ±10%
Size of Light Field	12-30 cm
Colour Temperature	4000-5000 K
Colour Rendering Index	93 RA
LED Life	>50000 Hrs.
Number of LED	126 +126
Diameter of Light	500mm x 2
Brightness Control	Capacitive Touch Panel
Power Supply	220V/50Hz AC
Colour of LED	White & Yellow (Double Colour)
Focusing	Adjustable

Easily detachable connector based OT Light / Optional



Optional 360° Rotation

M Memory Function

E Endo Mode

KMI HEX 126+105

Adjustable Colour Temperature

Special Features

Shadowless Light, Memory Function, High quality sterilizable handle, With protective fire resistant ESG safety glass for scratch proof, fast disinfection process, protects UV and IR rays and improve light penetration. With special European design for ventilation of heat. Body is made of high quality fire resistant polymer.

OPTIONAL: BATTERY BACKUP



Technical Data

Intensity	1,50,000 +1,60,000 Lux ±10%
Size of Light Field	12-30 cm
Colour Temperature	4000-5000 K
Colour Rendering Index	93 RA
LED Life	>50000 Hrs.
Number of LED	105 + 126
Diameter of Light	500mm x 2
Brightness Control	Capacitive Touch Panel
Power Supply	220V/50Hz AC
Colour of LED	White & Yellow (Double Colour)
Focusing	Adjustable

Easily detachable connector based OT Light / Optional



M Memory Function

E Endo Mode

KMI HEX 126+84

Adjustable Colour Temperature

Special Features

Shadowless Light, Memory Function, High quality sterilizable handle, With protective fire resistant ESG safety glass for scratch proof, fast disinfection process, protects UV and IR rays and improve light penetration. With special European design for ventilation of heat. Body is made of high quality fire resistant polymer.

OPTIONAL: BATTERY BACKUP



Technical Data

Intensity	1,30,000 + 1,60,000 Lux $\pm 10\%$
Size of Light Field	12-30 cm
Colour Temperature	4000-5000 K
Colour Rendering Index	93 RA
LED Life	>50000 Hrs.
Number of LED	84 + 126
Diameter of Light	500mm x 2
Brightness Control	Capacitive Touch Panel
Power Supply	220V/50Hz AC
Colour of LED	White & Yellow (Double Colour)
Focusing	Adjustable

Easily detachable connector based OT Light / Optional

M Memory Function

E Endo Mode

KMI HEX 126+63

Adjustable Colour Temperature

Special Features

Shadowless Light, Memory Function, High quality sterilizable handle, With protective fire resistant ESG safety glass for scratch proof, fast disinfection process, protects UV and IR rays and improve light penetration. With special European design for ventilation of heat. Body is made of high quality fire resistant polymer.

OPTIONAL: BATTERY BACKUP



Technical Data

Intensity	1,60,000 + 90,000 Lux $\pm 10\%$
Size of Light Field	12-30 cm
Colour Temperature	4000-5000 K
Colour Rendering Index	93 RA
LED Life	>50000 Hrs.
Number of LED	126 + 63
Diameter of Light	500mm x 2
Brightness Control	Capacitive Touch Panel
Power Supply	220V/50Hz AC
Colour of LED	White & Yellow (Double Colour)
Focusing	Adjustable

Easily detachable connector based OT Light / Optional

M Memory Function

E Endo Mode

KMI HEX 105+105

Adjustable Colour Temperature

Special Features

Shadowless Light, Memory Function, High quality sterilizable handle, With protective fire resistant ESG safety glass for scratch proof, fast disinfection process, protects UV and IR rays and improve light penetration. With special European design for ventilation of heat. Body is made of high quality fire resistant polymer.

OPTIONAL: BATTERY BACKUP



Technical Data

Intensity	1,50,000 + 1,50,000 Lux \pm 10%
Size of Light Field	12-30 cm
Colour Temperature	4000-5000 K
Colour Rendering Index	93 RA
LED Life	>50000 Hrs.
Number of LED	105 +105
Diameter of Light	500mm x 2
Brightness Control	Capacitive Touch Panel
Power Supply	220V/50Hz AC
Colour of LED	White & Yellow (Double Colour)
Focusing	Adjustable

Easily detachable connector based OT Light / Optional

M Memory Function

E Endo Mode

KMI HEX 105+84

Adjustable Colour Temperature

Special Features

Shadowless Light, Memory Function, High quality sterilizable handle, With protective fire resistant ESG safety glass for scratch proof, fast disinfection process, protects UV and IR rays and improve light penetration. With special European design for ventilation of heat. Body is made of high quality fire resistant polymer.

OPTIONAL: BATTERY BACKUP



Technical Data

Intensity	1,50,000 + 1,30,000 Lux \pm 10%
Size of Light Field	12-30 cm
Colour Temperature	4000-5000 K
Colour Rendering Index	93 RA
LED Life	>50000 Hrs.
Number of LED	105 + 84
Diameter of Light	500mm x 2
Brightness Control	Capacitive Touch Panel
Power Supply	220V/50Hz AC
Colour of LED	White & Yellow (Double Colour)
Focusing	Adjustable

Easily detachable connector based OT Light / Optional

M Memory Function

E Endo Mode

KMI HEX 105+63

Adjustable Colour Temperature

Special Features

Shadowless Light, Memory Function, High quality sterilizable handle, With protective fire resistant ESG safety glass for scratch proof, fast disinfection process, protects UV and IR rays and improve light penetration. With special European design for ventilation of heat. Body is made of high quality fire resistant polymer.

OPTIONAL: BATTERY BACKUP



Technical Data

Intensity	1,50,000 + 90,000 Lux \pm 10%
Size of Light Field	12-30 cm
Colour Temperature	4000-5000 K
Colour Rendering Index	93 RA
LED Life	>50000 Hrs.
Number of LED	105 + 63
Diameter of Light	500mm x 2
Brightness Control	Capacitive Touch Panel
Power Supply	220V/50Hz AC
Colour of LED	White & Yellow (Double Colour)
Focusing	Adjustable

Easily detachable connector based OT Light / Optional



M Memory Function

E Endo Mode

KMI HEX 84+84

Adjustable Colour Temperature

Special Features

Shadowless Light, Memory Function, High quality sterilizable handle, With protective fire resistant ESG safety glass for scratch proof, fast disinfection process, protects UV and IR rays and improve light penetration. With special European design for ventilation of heat. Body is made of high quality fire resistant polymer.

OPTIONAL: BATTERY BACKUP



Technical Data

Intensity	1,30,000 + 1,30,000 Lux \pm 10%
Size of Light Field	12-30 cm
Colour Temperature	4000-5000 K
Colour Rendering Index	93 RA
LED Life	>50000 Hrs.
Number of LED	84 + 84
Diameter of Light	500mm x 2
Brightness Control	Capacitive Touch Panel
Power Supply	220V/50Hz AC
Colour of LED	White & Yellow (Double Colour)
Focusing	Adjustable

Easily detachable connector based OT Light / Optional



M Memory Function

E Endo Mode

KMI HEX 84+63

Adjustable Colour Temperature

Special Features

Shadowless Light, Memory Function, High quality sterilizable handle, With protective fire resistant ESG safety glass for scratch proof, fast disinfection process, protects UV and IR rays and improve light penetration. With special European design for ventilation of heat. Body is made of high quality fire resistant polymer.

OPTIONAL: BATTERY BACKUP



Technical Data

Intensity	1,30,000 + 90,000 Lux \pm 10%
Size of Light Field	12-30 cm
Colour Temperature	4000-5000 K
Colour Rendering Index	93 RA
LED Life	>50000 Hrs.
Number of LED	84 + 63
Diameter of Light	500mm x 2
Brightness Control	Capacitive Touch Panel
Power Supply	220V/50Hz AC
Colour of LED	White & Yellow (Double Colour)
Focusing	Adjustable

Easily detachable connector based OT Light / Optional



M Memory Function

E Endo Mode

KMI HEX 63+63

Adjustable Colour Temperature

Special Features

Shadowless Light, Memory Function, High quality sterilizable handle, With protective fire resistant ESG safety glass for scratch proof, fast disinfection process, protects UV and IR rays and improve light penetration. With special European design for ventilation of heat. Body is made of high quality fire resistant polymer.

OPTIONAL: BATTERY BACKUP



Technical Data

Intensity	90,000 + 90,000 Lux \pm 10%
Size of Light Field	12-30 cm
Colour Temperature	4000-5000 K
Colour Rendering Index	93 RA
LED Life	>50000 Hrs.
Number of LED	63 + 63
Diameter of Light	500mm x 2
Brightness Control	Capacitive Touch Panel
Power Supply	220V/50Hz AC
Colour of LED	White & Yellow (Double Colour)
Focusing	Adjustable

Easily detachable connector based OT Light / Optional



M Memory Function

E Endo Mode

KMI HEX 126

Adjustable Colour Temperature

Special Features

Shadowless Light, Memory Function, High quality sterilizable handle, With protective fire resistant ESG safety glass for scratch proof, fast disinfection process, protects UV and IR rays and improve light penetration. With special European design for ventilation of heat. Body is made of high quality fire resistant polymer.

OPTIONAL: BATTERY BACKUP



M Memory Function

E Endo Mode

Technical Data

Intensity	1,60,000 Lux \pm 10%
Size of Light Field	12-30 cm
Colour Temperature	4000-5000 K
Colour Rendering Index	93 RA
LED Life	>50000 Hrs.
Number of LED	126
Diameter of Light	500mm
Brightness Control	Capacitive Touch Panel
Power Supply	220V/50Hz AC
Colour of LED	White & Yellow (Double Colour)
Focusing	Adjustable

Easily detachable connector based OT Light / Optional



Mobile Model

Mobile Model
with battery backup

KMI HEX 105

Adjustable Colour Temperature

Special Features

Shadowless Light, Memory Function, High quality sterilizable handle, With protective fire resistant ESG safety glass for scratch proof, fast disinfection process, protects UV and IR rays and improve light penetration. With special European design for ventilation of heat. Body is made of high quality fire resistant polymer.

OPTIONAL: BATTERY BACKUP



M Memory Function

E Endo Mode

Technical Data

Intensity	1,50,000 Lux \pm 10%
Size of Light Field	12-30 cm
Colour Temperature	4000-5000 K
Colour Rendering Index	93 RA
LED Life	>50000 Hrs.
Number of LED	105
Diameter of Light	500mm
Brightness Control	Capacitive Touch Panel
Power Supply	220V/50Hz AC
Colour of LED	White & Yellow (Double Colour)
Focusing	Adjustable

Easily detachable connector based OT Light / Optional



Mobile Model

Mobile Model
with battery backup

KMI HEX 84

Adjustable Colour Temperature

Special Features

Shadowless Light, Memory Function, High quality sterilizable handle, With protective fire resistant ESG safety glass for scratch proof, fast disinfection process, protects UV and IR rays and improve light penetration. With special European design for ventilation of heat. Body is made of high quality fire resistant polymer.

OPTIONAL: BATTERY BACKUP



M Memory Function

E Endo Mode

Technical Data

Intensity	1,30,000 Lux $\pm 10\%$
Size of Light Field	12-30 cm
Colour Temperature	4000-5000 K
Colour Rendering Index	93 RA
LED Life	>50000 Hrs.
Number of LED	84
Diameter of Light	500mm
Brightness Control	Capacitive Touch Panel
Power Supply	220V/50Hz AC
Colour of LED	White & Yellow (Double Colour)
Focusing	Adjustable

Easily detachable connector based OT Light / Optional



Mobile Model



Mobile Model
with battery backup

KMI HEX 63

Adjustable Colour Temperature

Special Features

Shadowless Light, Memory Function, High quality sterilizable handle, With protective fire resistant ESG safety glass for scratch proof, fast disinfection process, protects UV and IR rays and improve light penetration. With special European design for ventilation of heat. Body is made of high quality fire resistant polymer.

OPTIONAL: BATTERY BACKUP



M Memory Function

E Endo Mode

Technical Data

Intensity	90,000 Lux $\pm 10\%$
Size of Light Field	12-30 cm
Colour Temperature	4000-5000 K
Colour Rendering Index	93 RA
LED Life	>50000 Hrs.
Number of LED	63
Diameter of Light	500mm
Brightness Control	Capacitive Touch Panel
Power Supply	220V/50Hz AC
Colour of LED	White & Yellow (Double Colour)
Focusing	Adjustable

Easily detachable connector based OT Light / Optional



Mobile Model



Mobile Model
with battery backup

KMI HEX CT 5+5

Adjustable Colour Temperature

Special Features

Shadowless Light, Memory Function, High quality sterilizable handle, With protective fire resistant ESG safety glass for scratch proof, fast disinfection process, protects UV and IR rays and improve light penetration. With special European design for ventilation of heat. Body is made of high quality fire resistant polymer.

OPTIONAL: BATTERY BACKUP



Technical Data

Intensity	1,40,000 + 1,40,000 Lux \pm 10%
Size of Light Field	12-30 cm
Colour Temperature	4000-5000 K
Colour Rendering Index	93 RA
LED Life	>50000 Hrs.
Number of LED	95 + 95
Diameter of Light	500mm x 2
Brightness Control	Capacitive Touch Panel
Power Supply	220V/50Hz AC
Colour of LED	White & Yellow (Double Colour)
Focusing	Adjustable

M Memory Function

E Endo Mode

KMI HEX CT 5+4

Adjustable Colour Temperature

Special Features

Shadowless Light, Memory Function, High quality sterilizable handle, With protective fire resistant ESG safety glass for scratch proof, fast disinfection process, protects UV and IR rays and improve light penetration. With special European design for ventilation of heat. Body is made of high quality fire resistant polymer.

OPTIONAL: BATTERY BACKUP



Technical Data

Intensity	1,40,000 + 1,10,000 Lux \pm 10%
Size of Light Field	12-30 cm
Colour Temperature	4000-5000 K
Colour Rendering Index	93 RA
LED Life	>50000 Hrs.
Number of LED	95 + 76
Diameter of Light	500mm x 2
Brightness Control	Capacitive Touch Panel
Power Supply	220V/50Hz AC
Colour of LED	White & Yellow (Double Colour)
Focusing	Adjustable

M Memory Function

E Endo Mode

KMI HEX CT 5+3

Adjustable Colour Temperature

Special Features

Shadowless Light, Memory Function, High quality sterilizable handle, With protective fire resistant ESG safety glass for scratch proof, fast disinfection process, protects UV and IR rays and improve light penetration. With special European design for ventilation of heat. Body is made of high quality fire resistant polymer.

OPTIONAL: BATTERY BACKUP



Technical Data

Intensity	80,000 + 1,40,000 Lux \pm 10%
Size of Light Field	12-30 cm
Colour Temperature	4000-5000 K
Colour Rendering Index	93 RA
LED Life	>50000 Hrs.
Number of LED	57 + 95
Diameter of Light	500mm x 2
Brightness Control	Capacitive Touch Panel
Power Supply	220V/50Hz AC
Colour of LED	White & Yellow (Double Colour)
Focusing	Adjustable

M Memory Function

E Endo Mode

KMI HEX CT 4+4

Adjustable Colour Temperature

Special Features

Shadowless Light, Memory Function, High quality sterilizable handle, With protective fire resistant ESG safety glass for scratch proof, fast disinfection process, protects UV and IR rays and improve light penetration. With special European design for ventilation of heat. Body is made of high quality fire resistant polymer.

OPTIONAL: BATTERY BACKUP



Technical Data

Intensity	1,10,000 + 1,10,000 Lux \pm 10%
Size of Light Field	12-30 cm
Colour Temperature	4000-5000 K
Colour Rendering Index	93 RA
LED Life	>50000 Hrs.
Number of LED	76 + 76
Diameter of Light	500mm x 2
Brightness Control	Capacitive Touch Panel
Power Supply	220V/50Hz AC
Colour of LED	White & Yellow (Double Colour)
Focusing	Adjustable

M Memory Function

E Endo Mode

KMI HEX CT 4+3

Adjustable Colour Temperature

Special Features

Shadowless Light, Memory Function, High quality sterilizable handle, With protective fire resistant ESG safety glass for scratch proof, fast disinfection process, protects UV and IR rays and improve light penetration. With special European design for ventilation of heat. Body is made of high quality fire resistant polymer.

OPTIONAL: BATTERY BACKUP



Technical Data

Intensity	80,000 + 1,10,000 Lux ±10%
Size of Light Field	12-30 cm
Colour Temperature	4000-5000 K
Colour Rendering Index	93 RA
LED Life	>50000 Hrs.
Number of LED	57 + 76
Diameter of Light	500mm x 2
Brightness Control	Capacitive Touch Panel
Power Supply	220V/50Hz AC
Colour of LED	White & Yellow (Double Colour)
Focusing	Adjustable



M Memory Function

E Endo Mode

KMI HEX CT 3+3

Adjustable Colour Temperature

Special Features

Shadowless Light, Memory Function, High quality sterilizable handle, With protective fire resistant ESG safety glass for scratch proof, fast disinfection process, protects UV and IR rays and improve light penetration. With special European design for ventilation of heat. Body is made of high quality fire resistant polymer.

OPTIONAL: BATTERY BACKUP



Technical Data

Intensity	80,000 + 80,000 Lux ±10%
Size of Light Field	12-30 cm
Colour Temperature	4000-5000 K
Colour Rendering Index	93 RA
LED Life	>50000 Hrs.
Number of LED	57 + 57
Diameter of Light	500mm x 2
Brightness Control	Capacitive Touch Panel
Power Supply	220V/50Hz AC
Colour of LED	White & Yellow (Double Colour)
Focusing	Adjustable



M Memory Function

E Endo Mode

KMI HEX CT 5

Adjustable Colour Temperature

Special Features

Shadowless Light, Memory Function, High quality sterilizable handle, With protective fire resistant ESG safety glass for scratch proof, fast disinfection process, protects UV and IR rays and improve light penetration. With special European design for ventilation of heat. Body is made of high quality fire resistant polymer.

OPTIONAL: BATTERY BACKUP



M Memory Function

E Endo Mode

Technical Data

Intensity	1,40,000 Lux \pm 10%
Size of Light Field	12-30 cm
Colour Temperature	4000-5000 K
Colour Rendering Index	93 RA
LED Life	>50000 Hrs.
Number of LED	95
Diameter of Light	500mm
Brightness Control	Capacitive Touch Panel
Power Supply	220V/50Hz AC
Colour of LED	White & Yellow (Double Colour)
Focusing	Adjustable



Mobile Model



Mobile Model
with battery backup

KMI HEX CT 4

Adjustable Colour Temperature

Special Features

Shadowless Light, Memory Function, High quality sterilizable handle, With protective fire resistant ESG safety glass for scratch proof, fast disinfection process, protects UV and IR rays and improve light penetration. With special European design for ventilation of heat. Body is made of high quality fire resistant polymer.

OPTIONAL: BATTERY BACKUP



M Memory Function

E Endo Mode

Technical Data

Intensity	1,10,000 Lux \pm 10%
Size of Light Field	12-30 cm
Colour Temperature	4000-5000 K
Colour Rendering Index	93 RA
LED Life	>50000 Hrs.
Number of LED	76
Diameter of Light	500mm
Brightness Control	Capacitive Touch Panel
Power Supply	220V/50Hz AC
Colour of LED	White & Yellow (Double Colour)
Focusing	Adjustable



Mobile Model



Mobile Model
with battery backup

KMI HEX CT 3

Adjustable Colour Temperature

Special Features

Shadowless Light, Memory Function, High quality sterilizable handle, With protective fire resistant ESG safety glass for scratch proof, fast disinfection process, protects UV and IR rays and improve light penetration. With special European design for ventilation of heat. Body is made of high quality fire resistant polymer.

OPTIONAL: BATTERY BACKUP



Technical Data

Intensity	80,000 Lux $\pm 10\%$
Size of Light Field	12-30 cm
Colour Temperature	4000-5000 K
Colour Rendering Index	93 RA
LED Life	>50000 Hrs.
Number of LED	57
Diameter of Light	500mm
Brightness Control	Capacitive Touch Panel
Power Supply	220V/50Hz AC
Colour of LED	White & Yellow (Double Colour)
Focusing	Adjustable



Mobile Model



Mobile Model
with battery backup



SIGMA 4+4

Special Features

Shadowless Light, High quality sterilizable handle. With special European design for ventilation of heat. Body is made of high quality fire resistant polymer. With Dual Colour LED White and Yellow.

OPTIONAL: BATTERY BACKUP



Technical Data

Intensity	100,000 + 100,000 ±10%
Size of Light Field	12-30 cm
Colour Temperature	4000-5000 K
Colour Rendering Index	93 RA
LED Life	>50000 Hrs.
Number of LED	56 + 56
Diameter of Light	500mm x 2
Power Supply	220V/50Hz AC
Focusing	Adjustable



SIGMA 4+3

Special Features

Shadowless Light, High quality sterilizable handle. With special European design for ventilation of heat. Body is made of high quality fire resistant polymer. With Dual Colour LED White and Yellow.

OPTIONAL: BATTERY BACKUP



Technical Data

Intensity	100,000 + 80,000 ±10%
Size of Light Field	12-30 cm
Colour Temperature	4000-5000 K
Colour Rendering Index	93 RA
LED Life	>50000 Hrs.
Number of LED	56 + 42
Diameter of Light	500mm x 2
Power Supply	220V/50Hz AC
Focusing	Adjustable



SIGMA 3+3

Special Features

Shadowless Light, High quality sterilizable handle. With special European design for ventilation of heat. Body is made of high quality fire resistant polymer. With Dual Colour LED White and Yellow.

OPTIONAL: BATTERY BACKUP



Optional All LED in White Colour

Technical Data

Intensity	80,000 + 80,000 ±10%
Size of Light Field	12-30 cm
Colour Temperature	4000-5000 K
Colour Rendering Index	93 RA
LED Life	>50000 Hrs.
Number of LED	42 + 42
Diameter of Light	500mm x 2
Power Supply	220V/50Hz AC
Focusing	Adjustable

SIGMA 4

Special Features

Shadowless Light, High quality sterilizable handle. With special European design for ventilation of heat. Body is made of high quality fire resistant polymer. With Dual Colour LED White and Yellow.

OPTIONAL: BATTERY BACKUP



Optional All LED in White Colour

Technical Data

Intensity	100,000 ±10%
Size of Light Field	12-30 cm
Colour Temperature	4000-5000 K
Colour Rendering Index	93 RA
LED Life	>50000 Hrs.
Number of LED	56
Diameter of Light	500mm
Power Supply	220V/50Hz AC
Focusing	Adjustable



Mobile Model

Mobile Model with battery backup

SIGMA 3

Special Features

Shadowless Light, High quality sterilizable handle. With special European design for ventilation of heat. Body is made of high quality fire resistant polymer. With Dual Colour LED White and Yellow.

OPTIONAL: BATTERY BACKUP 

Technical Data

Intensity	80,000 ±10%
Size of Light Field	12-30 cm
Colour Temperature	4000-5000 K
Colour Rendering Index	93 RA
LED Life	>50000 Hrs.
Number of LED	42
Diameter of Light	500mm
Power Supply	220V/50Hz AC
Focusing	Adjustable



Optional All LED in White Colour



Mobile Model

Mobile Model
with battery backup



KMI EL-NOVA

Special Features

Shadowless Light, With special European design for ventilation of heat. Body is made of high quality fire resistant polymer. With Dual Colour LED White and Yellow.

OPTIONAL: BATTERY BACKUP



Technical Data

Intensity	55,000 Lux \pm 10%
Size of Light Field	125mm
Colour Temperature	4500-5000 K
Colour Rendering Index	93 RA
LED Life	>50000 Hrs.
Number of LED	21
Brightness Control	Touch
Diameter of Light	150mm
Power Supply	220V/50Hz AC



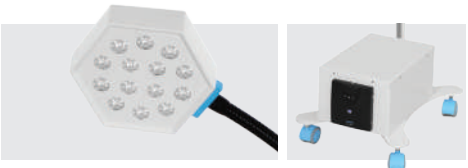
Note: Also available Table Mounted

KMI EL-HEX

Special Features

Shadowless Light, With special European design for ventilation of heat. Body is made of high quality fire resistant polymer. With Dual Colour LED White and Yellow.

OPTIONAL: BATTERY BACKUP



Technical Data

Intensity	45,000 Lux \pm 10%
Size of Light Field	125mm
Colour Temperature	4500-5000 K
Colour Rendering Index	93 RA
LED Life	>50000 Hrs.
Number of LED	14
Brightness Control	Touch
Diameter of Light	150mm
Power Supply	220V/50Hz AC



Note: Also available Table Mounted

KMI EL-C

Special Features

Shadowless Light, High quality sterilizable handle. With special European design for ventilation of heat. Body is made of high quality fire resistant polymer. With Dual Colour LED White and Yellow.



Optional All LED in White Colour

OPTIONAL: BATTERY BACKUP



Technical Data

Intensity	40,000 Lux $\pm 10\%$
Size of Light Field	12-30 cm
Colour Temperature	4500 K
Colour Rendering Index	93 RA
LED Life	>50000 Hrs.
Number of LED	14
Brightness Control	Touch
Diameter of Light	150mm
Power Supply	220V/50Hz AC



Wall Mounted

Wall Mounted with Extended Rod

Note: Also available Table Mounted

KMI MB-07

Special Features

Shadowless Light, With special European design for ventilation of heat. Body is made of high quality fire resistant polymer.

OPTIONAL: BATTERY BACKUP



Technical Data

Intensity	25,000 Lux $\pm 10\%$
Size of Light Field	100 mm
Colour Temperature	4800 K
Colour Rendering Index	93 RA
LED Life	>50000 Hrs.
Number of LED	7
Diameter of Light	125 mm
Power Supply	220V/50Hz AC



Wall Mounted

Wall Mounted with Extended Rod

Note: Also available Table Mounted

MATRIX EHO
ELECTRIC OT TABLE

ELECTRO HYDRAULIC WITH MANUAL OVERRIDE



Weight Capacity - 300 Kg



Central Floor Locking



Manual Override

STEEL QUALITY 304 MEDICAL GRADE STAINLESS STEEL

MATRIX EHO

Special Features

Engineered for increasingly complex surgical scenes, Matrix EHO comes with extreme loads in any position. The modular structure enables it to be adapted to match the size of the patient and in no time at all it can be equipped for any surgical discipline. With the characteristics of high automation low noise and high reliability, Matrix EHO can be regarded as an ideal electro-hydraulic operating table.

- The need for operating tables with higher load capacity is increasing worldwide.
- Extreme weight load capacity of 300 kg with highest safety and stability.
- Modular design tabletop tailored for various surgical discipline needs. The Easy click new mounting point enables the table adapted to wide variety of surgery and patient's height. Waterproof design. Mattress
- Standard override panel control makes the control safer.

Salient Features

- Stainless Fitting - Detachable, head, leg & Pelvic section
- In built kidney bridge
- Five Sectional Radio - Translucent Top.
- Base & Cover made of attractive, easy to clean Stainless Steel.
- Sophisticated mechanics provide smooth, step less articulation of the table Top for precise patient positioning.
- Standby Battery Back-up with recharging circuit.

Technical Data

Length of Table	1900 mm
Width of Table Top	520 mm
Minimum Height (without Mattress)	Min. 750 mm
Maximum Height (without Mattress)	Max. 1000 mm
Trendelenburg	25°
Reverse Trendelenburg	25°
Lateral Tilt	+20°
Back Section	+70°
Head Section	+60°
Leg Section	0°-90°
Floor Locking System	Center Floor Locking

TABLE POSITIONS

- Height Adjustment - Up & Down
- Lateral Tilt - Left & Right
- Trendelenburg & Reverse Trendelenburg
- Flex Position & Reflex Position

MATRIX
ELECTRIC OT TABLE



STEEL QUALITY 304 MEDICAL GRADE STAINLESS STEEL

MATRIX

Special Features

- We are providing SMPS based control box which can handle better Voltage Fluctuations, When SMPS is idle there is zero current consumption and saves power. These are as per new European and American standards where the idle power consumption should be zero and where transformer based system are outdated.
- We provide remote which is ergonomically designed to have an easy and better grip with spiral cable and it has LED backlit switch with symbolic position figures making it convenient to use even in the dark.
- We provide zero position facility i.e by pressing the single button OT Table will come to normal position.
- We provide patient reverse orientation mode when head and leg section are interchanged.
- We provide 2 memory function in control panel.
- We provide indication of battery back in the second handset.
- The Handset is designed with Back LED Indicator for better visibility.
- Head and foot section is manually operated by the means of Ratchet System.
- We provide Stainless steel Covered Base and Column Covers for easy cleaning and hygiene.
- We provide Anti Bacterial and Anti Fungal Mattress.
- The motion of table is easy with double swivel castors 100mm diameter, in which 2 castors having brakes.

Technical Data

Length of Table	1900 mm
Width of Table Top	520 mm
Minimum Height (without Mattress)	Min. 750 mm
Maximum Height (without Mattress)	Max. 1000 mm
Trendelenburg	25°
Reverse Trendelenburg	25°
Lateral Tilt	+20°
Back Section	+70°
Head Section	+60°
Leg Section	0°-90°
Floor Locking System	Center Floor Locking

Salient Features

- Center Pillar
- Stainless Fitting - Detachable, head, leg & Pelvic section
- In built kidney bridge
- Five Sectional Radio - Translucent Top.
- Base & Cover made of attractive, easy to clean Stainless Steel.
- Sophisticated mechanics provide smooth, step less articulation of the table Top for precise patient positioning.
- Standby Battery Back-up with recharging circuit.

MATRIX ADVANCE
ELECTRIC OT TABLE



STEEL QUALITY 304 MEDICAL GRADE STAINLESS STEEL

MATRIX ADVANCE

Special Features

- We are providing SMPS based control box which can handle better Voltage Fluctuations, When SMPS is idle there is zero current consumption and saves power. These are as per new European and American standards where the idle power consumption should be zero and where transformer based system are outdated.
- We provide remote which is ergonomically designed to have an easy and better grip with spiral cable and it has LED backlit switch with symbolic position figures making it convenient to use even in the dark.
- We provide zero position facility i.e by pressing the single button OT Table will come to normal position.
- We provide patient reverse orientation mode when head and leg section are interchanged.
- We provide 2 memory function in control panel.
- We provide indication of battery back in the second handset.
- The Handset is designed with Back LED Indicator for better visibility.
- Head and foot section is manually operated by the means of Ratchet System.
- We provide Stainless steel Covered Base and Column Covers for easy cleaning and hygiene.
- We provide Anti Bacterial and Anti Fungal Mattress.
- The motion of table is easy with double swivel castors 100mm diameter, in which 2 castors having brakes.

Technical Data

Length of Table	1900 mm
Width of Table Top	520 mm
Minimum Height (without Mattress)	Min. 750 mm
Maximum Height (without Mattress)	Max. 1000 mm
Trendelenburg	25°
Reverse Trendelenburg	25°
Lateral Tilt	+20°
Back Section	+70°
Head Section	+60°
Leg Section	0°-90°
Floor Locking System	Center Floor Locking

Salient Features

- Sliding Top • Split Leg Section • Center Pillar • Stainless Fitting - Detachable, head, leg & Pelvic section • In built kidney bridge • Five Sectional Radio - Translucent Top.
- Base & Cover made of attractive, easy to clean Stainless Steel.
- Sophisticated mechanics provide smooth, step less articulation of the table Top for precise patient positioning.
- Standby Battery Back-up with recharging circuit.



Height Adjustment - Down



Height Adjustment - Up



Lateral Tilt - Left



Lateral Tilt - Right



Trendelenburg



Reverse Trendelenburg



Flex Position



Gynec Position

C-ARM COMPATIBLE ELECTRIC OT TABLE



STEEL QUALITY 304 MEDICAL GRADE STAINLESS STEEL

KMI-1201

Special Features

- Eccentric Pillars
- Stainless Fitting
- Detachable, head, leg & Pelvic section
- In built kidney bridge
- Five Sectional Radio - Translucent Top.
- Base & Cover made of attractive, easy to clean Stainless Steel.
- Sophisticated mechanics provide smooth, step less articulation of the table Top for precise patient positioning.
- Standby Battery Back-up with recharging circuit.

TABLE POSITIONS

- Height Adjustment - Up & Down
- Lateral Tilt - Left & Right
- Trendelenburg & Reverse Trendelenburg
- Flex Position & Reflex Position

Technical Data

Length of Table	1900 mm
Width of Table Top	520 mm
Minimum Height (without Mattress)	Min. 750 mm
Maximum Height (without Mattress)	Max. 1000 mm
Trendelenburg	25°
Reverse Trendelenburg	25°
Lateral Tilt	±20°
Back Section	±60°
Head Section	±60°
Leg Section	0°-90°
Floor Locking System	Manual

OPTIONAL



Low Height



Floor Locking by Remote



Manual Override

C-ARM COMPATIBLE ELECTRIC OT TABLE



ADDITIONAL CONTROL PANEL



MEMORY FUNCTION



ZERO POSITION

STEEL QUALITY 304 MEDICAL GRADE STAINLESS STEEL

KMI-1201 ADVANCE

Special Features

- We are providing first SMPS based control Box.
- Can handle better Voltage Fluctuations.
- When idle has zero current consumption and saves power, these are as per new European and American Standards where the idle power consumption should be zero and where Transformer based systems are outdated
- We are providing a Handset and Additional control panel
- Indication of Battery Back provided in the second handset.
- The Control panel has 2 memory functions.
- The second handset has also safety key to lock the complete handset
- The Handset is designed with Back LED Indicator for better visibility.
- This is the only handset with Backlight features

TABLE POSITIONS

- Height Adjustment - Up & Down
- Lateral Tilt - Left & Right
- Trendelenburg & Reverse Trendelenburg
- Flex Position & Reflex Position

Salient Features

- Eccentric Pillars • Stainless Fitting • Detachable, head, leg & Pelvic section • In built kidney bridge • Five Sectional Radio - Translucent Top. • Base & Cover made of attractive, easy to clean Stainless Steel. • Sophisticated mechanics provide smooth, step less articulation of the table Top for precise patient positioning. • Standby Battery Back-up with recharging circuit.

Technical Data

Length of Table	1900 mm
Width of Table Top	520 mm
Minimum Height (without Mattress)	Min. 750 mm
Maximum Height (without Mattress)	Max. 1000 mm
Trendelenburg	25°
Reverse Trendelenburg	25°
Lateral Tilt	±20°
Back Section	±60°
Head Section	±60°
Leg Section	0°-90°

OPTIONAL



Low Height



Floor Locking by Remote



Manual Override



C-ARM COMPATIBLE HYDRAULIC OT TABLE



STEEL QUALITY 304 MEDICAL GRADE STAINLESS STEEL

KMI-1202

Special Features

- Eccentric Pillars
- Stainless Fitting
- Detachable, head, leg & Pelvic section
- In built kidney bridge
- Five Sectional Radio - Translucent Top.
- Base & Cover made of attractive, easy to clean Stainless Steel.
- Sophisticated mechanics provide smooth, step less articulation of the table Top for precise patient positioning.

Technical Data

Length of Table	1900 mm
Width of Table Top	520 mm
Minimum Height (without Mattress)	Min. 750 mm
Maximum Height (without Mattress)	Max. 1000 mm
Trendelenburg	25°
Reverse Trendelenburg	25°
Lateral Tilt	±20°
Back Section	±70°
Head Section	±60°
Leg Section	0°-90°
Floor Locking System	Manual

C-ARM COMPATIBLE SEMI-ELECTRIC OT TABLE



OPTIONAL: BATTERY BACKUP



STEEL QUALITY 304 MEDICAL GRADE STAINLESS STEEL

KMI-1202 EL

Special Features

- Electric up & down by cable remote
- Eccentric Pillars
- Stainless Fitting
- Detachable, head, leg & Pelvic section
- In built kidney bridge
- Five Sectional Radio - Translucent Top.
- Base & Cover made of attractive, easy to clean Stainless Steel.
- Sophisticated mechanics provide smooth, step less articulation of the table Top for precise patient positioning.

Technical Data

Length of Table	1900 mm
Width of Table Top	520 mm
Minimum Height (without Mattress)	Min. 750 mm
Maximum Height (without Mattress)	Max. 1000 mm
Trendelenburg	25°
Reverse Trendelenburg	25°
Lateral Tilt	±20°
Back Section	±70°
Head Section	±60°
Leg Section	0°-90°
Floor Locking System	Manual



GENERAL SURGERY OT TABLE HYDRAULIC

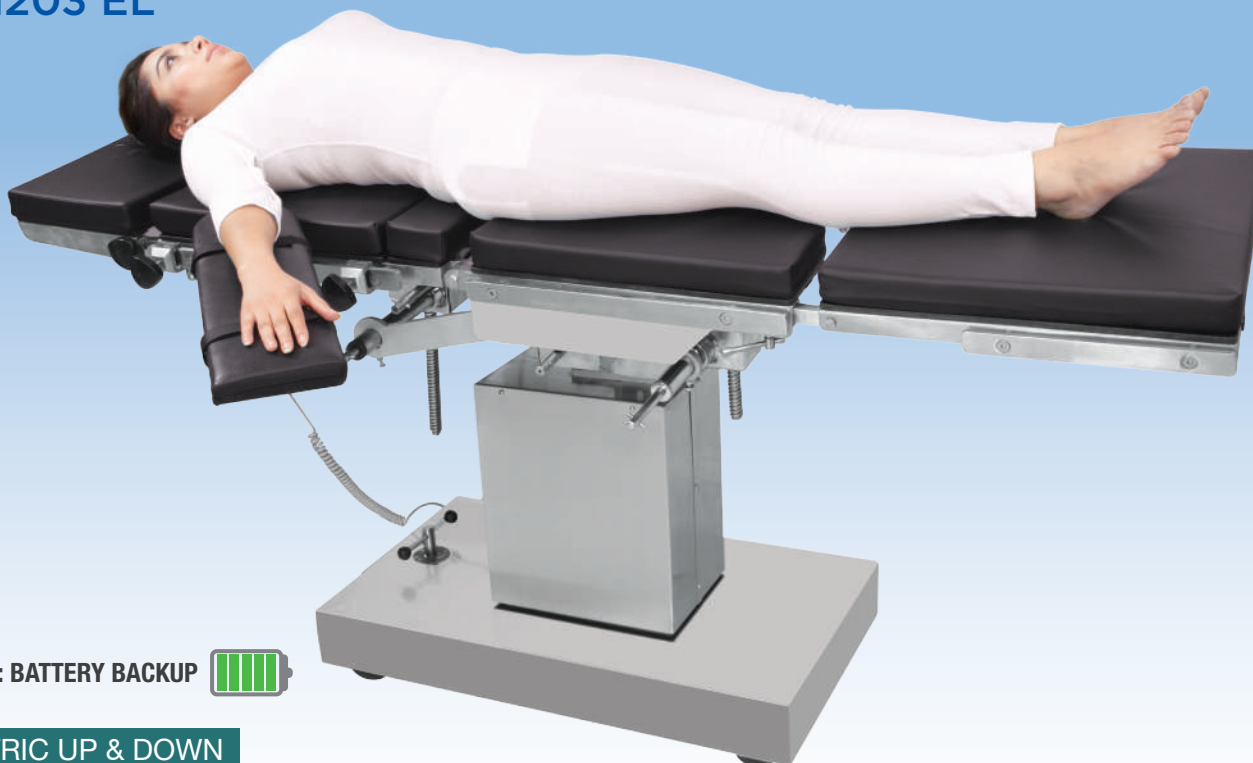
KMI-1203




HYDRAULIC UP & DOWN

GENERAL SURGERY OT TABLE SEMI-ELECTRIC

KMI-1203 EL



OPTIONAL: BATTERY BACKUP 

ELECTRIC UP & DOWN

POSITION OF GENERAL SURGERY OT TABLE



Chair Position



Examination & Birthing Position

Special Features

- Center Pillar
- Stainless Fitting
- Detachable, head, leg & Pelvic section
- In built kidney bridge
- Five Sectional Radio - Translucent.
- Base & Cover made of attractive, east to clean Stainless Steel.
- Sophisticated mechanics provide smooth, step less articulation of the table Top for precise patient positioning.

Technical Data

Length of Table	1900 mm
Width of Table Top	520 mm
Minimum Height (without Mattress)	Min. 750 mm
Maximum Height (without Mattress)	Max. 1000 mm
Trendelenburg	25°
Reverse Trendelenburg	25°
Lateral Tilt	±20°
Back Section	±70°
Head Section	±60°
Leg Section	0°-90°
Floor Locking System	Manual

SLIDING TOP ELECTRIC OT TABLE



SLIDING TOP

STEEL QUALITY 304 MEDICAL GRADE STAINLESS STEEL

KMI-1204

Special Features

This Electromatic sliding top O.T Table is suitable for all kind of surgeries, i.e. general surgery, vascular surgery, cardio, neurology, urology, gynecology, proctology, laparoscopy, traumatic surgery, plastic surgery and others. The base & column of the table is made of high quality medical stainless steel (Grade - 304). Non-reflecting surface, antibacterial & easy to clean. We provide with a top sliding of 5inch back/forward. Height adjustment, Lateral Tilts, Trendelenburg, and Flex - Reflex, Chair Position and Longitudinal Sliding top are realized by Remote control.

TABLE POSITIONS

- Height Adjustment - Up & Down
- Lateral Tilt - Left & Right
- Trendelenburg & Reverse Trendelenburg
- Flex Position & Reflex Position

Technical Data

Length of Table	1900 mm
Width of Table Top	520 mm
Minimum Height (without Mattress)	Min. 750 mm
Maximum Height (without Mattress)	Max. 1000 mm
Trendelenburg	25°
Reverse Trendelenburg	25°
Lateral Tilt	±20°
Back Section	±20°
Head Section	±60°
Leg Section	0°-90°
Top Sliding	5" Reverse & 5" Forward

OPTIONAL



Low Height



Floor Locking by Remote

Salient Features

- Eccentric Pillars • Stainless Fitting • Detachable, head, leg & Pelvic section • Four Sectional Radio - Translucent Top. • Base & Cover made of attractive, easy to clean Stainless Steel. • Sophisticated mechanics provide smooth, step less articulation of the table Top for precise patient positioning. • Standby Battery Back-up with recharging circuit.

ELECTRIC OT TABLE WITH SLIDING TOP



ADDITIONAL CONTROL PANEL



MEMORY FUNCTION



ZERO POSITION

STEEL QUALITY 304 MEDICAL GRADE STAINLESS STEEL

KMI-1204 ADVANCE

Special Features

This Electromatic sliding top O.T Table is suitable for all kind of surgeries, i.e. general surgery, vascular surgery, cardio, neurology, urology, gynecology, proctology, laparoscopy, traumatic surgery, plastic surgery and others. The base & column of the table is made of high quality medical stainless steel (Grade - 304). Non-reflecting surface, antibacterial & easy to clean. We provide with a top sliding of 5inch back/forward. Height adjustment, Lateral Tilts, Trendelenburg, and Flex - Reflex, Chair Position and Longitudinal Sliding top are realized by Remote control.

TABLE POSITIONS

- Height Adjustment - Up & Down
- Lateral Tilt - Left & Right
- Trendelenburg & Reverse Trendelenburg
- Flex Position & Reflex Position

Technical Data

Length of Table	1900 mm
Width of Table Top	520 mm
Minimum Height (without Mattress)	Min. 750 mm
Maximum Height (without Mattress)	Max. 1000 mm
Trendelenburg	25°
Reverse Trendelenburg	25°
Lateral Tilt	±20°
Back Section	±20°
Head Section	±60°
Leg Section	0°-90°
Top Sliding	5" Reverse & 5" Forward

OPTIONAL



Low Height



Floor Locking by Remote

Salient Features

- Eccentric Pillars • Stainless Fitting • Detachable, head, leg & Pelvic section • Four Sectional Radio - Translucent Top. • Base & Cover made of attractive, easy to clean Stainless Steel. • Sophisticated mechanics provide smooth, step less articulation of the table Top for precise patient positioning. • Standby Battery Back-up with recharging circuit.

NEURO ATTACHMENT



STEEL QUALITY 304 MEDICAL GRADE STAINLESS STEEL

KMI-1205

We are ranked as one of the leading manufacturers, suppliers, exporters, traders and distributors of excellent quality Neuro Surgery Attachments. These neuro surgery attachments provide neuro surgeons stable and excellent support as they perform different medical procedures. These neuro surgery attachments are very durable made from excellent quality stainless steel and other materials. We provide ophthalmologic procedures using the narrow headrest, neurology procedures in prone position and supine position (Sugita six pin fixator and Horse Shoe).



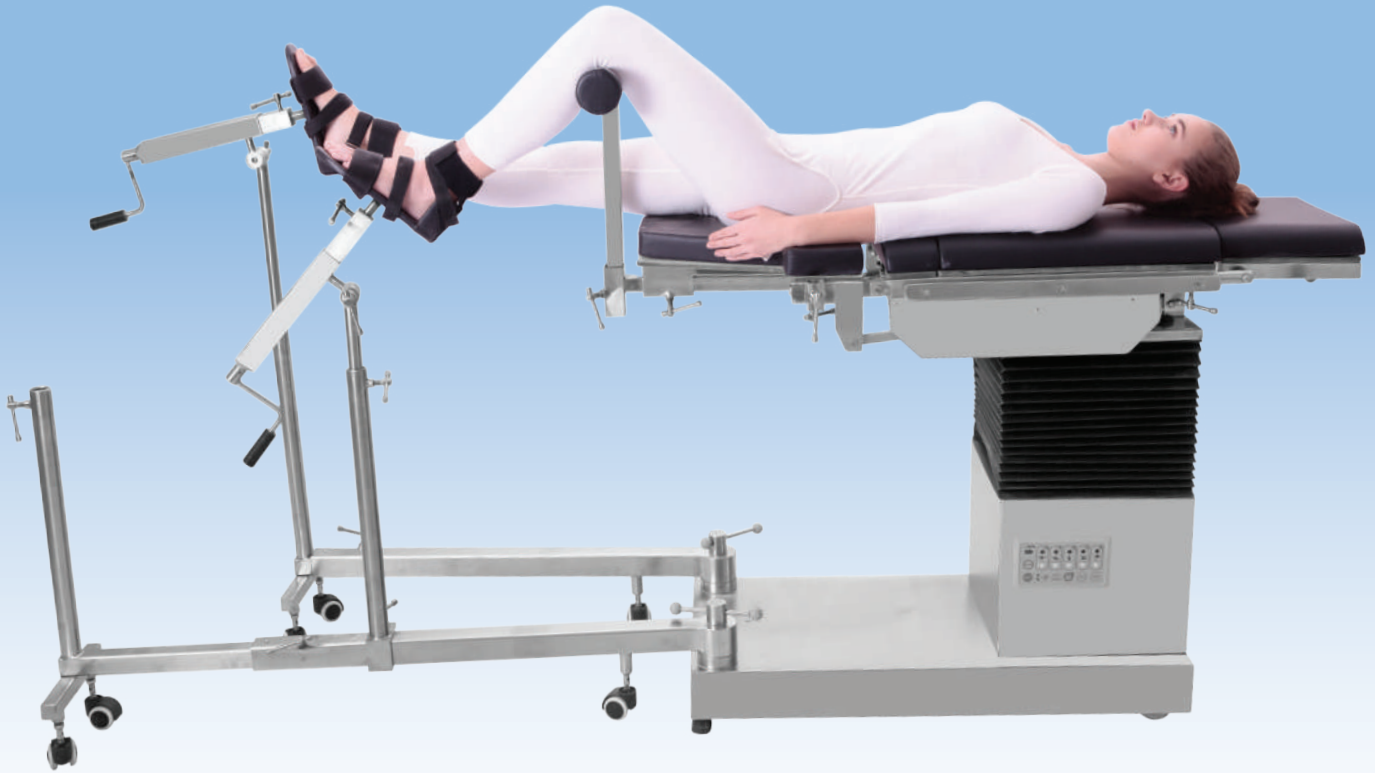
Horse Shoe Position



Sugita Head Fixator
for Supine position & Skull Pins



ALBEE'S TYPE ORTHO ATTACHMENT



KMI-1206 ALBEE'S TYPE

Special Features

Ortho Attachment allows the table to be used for the lower extremity procedures. Available at competitive prices our ortho attachment is purely made of stainless steel which resist corrosion.

Salient Features

- The Orthopedic Attachment can be used with any operating table.
- In addition, a pelvic support plate is supported on top of the frame and is formed with an asymmetrical construction.
- Stirring Instruments allows flexion/raising of legs & stirring/string ball joints locked from foot end.
- Two traction devices on sliding spot with ball joint allowing flexions & rotations of foot with traction shoe with metallic sole.
- Padded orthopedic knee crutches/provides support to the legs of the patient.



Patient positioning for Neck of femur nailing traction (D.H.S)



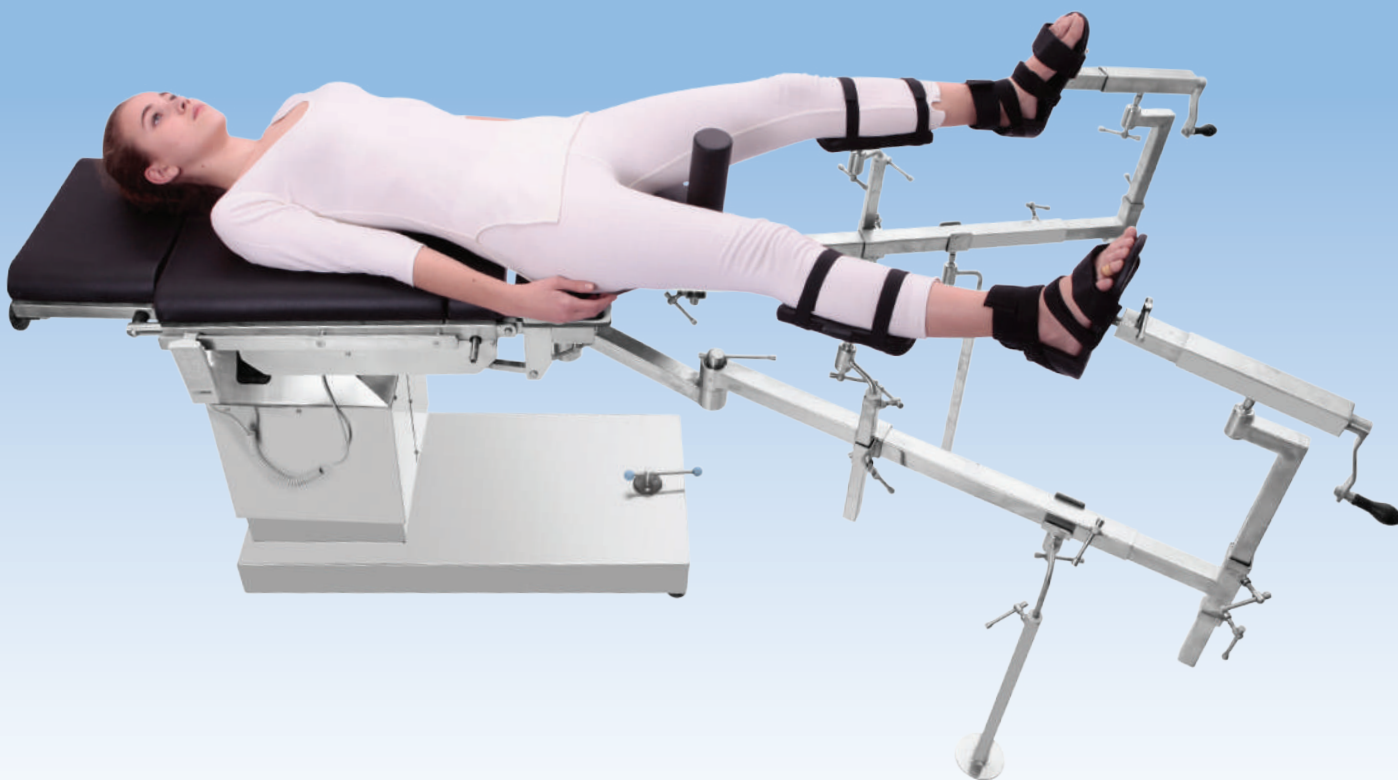
Femur treatment in lateral position



Tibia extension position



HANGING TYPE ORTHOPEDIC ATTACHMENT



KMI-1206 HANGING TYPE

Special Features

Ortho Attachment allows the table to be used for the lower extremity procedures. Available at competitive prices our ortho attachment is purely made of stainless steel which resist corrosion.

Salient Features

- The Orthopedic Attachment can be used with any operating table.
- In addition, a pelvic support plate is supported on top of the frame and is formed with an asymmetrical construction.
- Stirring Instruments allows flexion/raising of legs & stirring/string ball joints locked from foot end.
- Two traction devices on sliding spot with ball joint allowing flexions & rotations of foot with traction shoe with metallic sole.
- Padded orthopedic knee crutches/provides support to the legs of the patient.

OPHTHALMIC ELECTRIC OT TABLE



Foot Switch (Optional)

OPTIONAL: BATTERY BACKUP

STEEL QUALITY 304 MEDICAL GRADE STAINLESS STEEL

KMI-1207 OPHTHALMIC

Special Features

This Ophthalmic Table is specially designed for ophthalmic surgery. Three sectional table is provided with drainage system in the head section. The table has sturdy base, column made up of stainless steel, antibacterial and is easy to clean. Electromotive height with the help of lightweight handheld control unit.

Standard Accessories

- Anesthetic Screen
- IV Pole
- Hand Rest
- Mattress

Optional

- Instrument Tray

Salient Features

- Stainless Fitting
- Detachable, head & leg section
- Three Sectional Radio - Translucent Top.
- Base & Cover made of attractive, easy to clean Stainless Steel.
- Sophisticated mechanics provide smooth, step less articulation of the table Top for precise patient positioning



Instrument Tray (Optional)

Technical Data

Length of Table	1900 mm
Width of Table Top	520 mm
Minimum Height (without Mattress)	Min. 750 mm
Maximum Height (without Mattress)	Max. 1000 mm
Leg Section	0°-90°

ELECTRIC GYNECOLOGICAL OBSTETRIC OT TABLE



Colour options



White Blue Pink

OPTIONAL: BATTERY BACKUP



STEEL QUALITY 304 MEDICAL GRADE STAINLESS STEEL

KMI-1208

Special Features

Obstetrics operating room table perfect for all kinds of gynecological operations. The cover for base and column is made of 304 stainless steel, good performance on anti-rust and easy to clean.

Salient Features

- Functional and versatile
- Flexibility and precision
- Hygienic design
- Easy cleaning
- User-friendly

Standard Accessories

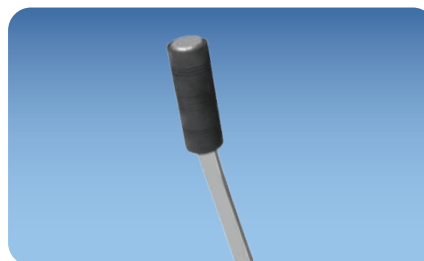
- Arm Rest - 2 pcs.
- Birth Handle - 2 pcs.
- Mattress
- Gynae Tray

Technical Data

Length of Table	1600 mm
Width of Table Top	550 mm
Minimum Height (without Mattress)	Min. 700 mm
Maximum Height (without Mattress)	Max. 950 mm
Trendelenburg	±20°
Back Section	±70°
Floor Locking System	Manual



Gynae Tray



Birth Handle



Foot Switch (Optional)

DERMA CHAIR



OPTIONAL: BATTERY BACKUP



STEEL QUALITY 304 MEDICAL GRADE STAINLESS STEEL

Colour options



KMI-1209

Special Features

- Luxurious Styling
- Multi-position section couch
- Suitable for all Dermatology, Cosmetology & Laser Surgery.
- Stable and professional design, unlike Saloon Chairs.
- Three independent motors - for Height, Leg Section & Back Section
- Elegant upholstery and all english colours



Foot Switch (Optional)



Height Adjustment - Up / Down

Technical Data

Power	230 V 50 Hz
Size (mm)	2000 x 610 x 700
Weight	80 Kgs
Motors	3 independent
Remote	Provided

IMAGING OPERATING TABLE



STEEL QUALITY 304 MEDICAL GRADE STAINLESS STEEL

KMI-1212

Special Features

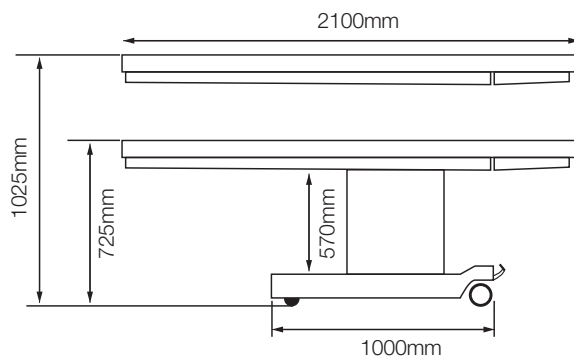
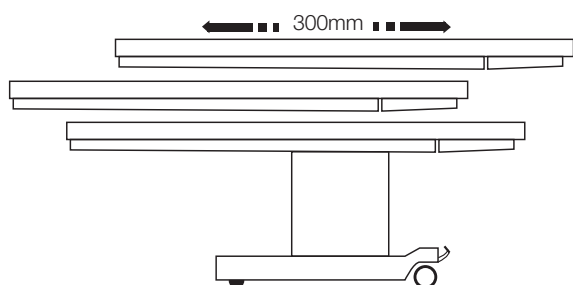
- Corded hand Remote
- Additional operating panel with colour display for electric functions at column
- Radiolucent table top, fully imaging permeable
- Table top with side rails made of S.S 304 for attachment of accessories
- Front side rails made of carbon fibre for attachment of head rest systems
- Longitudinal shifting table top
- 50 mm thick mattress

Standard Accessories

- Anesthetic Screen
- IV Pole
- Hand Rest
- Mattress

Technical Data

Length of Table	2100mm
Width of Table Top	525mm
Table Sliding	300mm



ELECTRIC ANIMAL OPERATING TABLE



OPTIONAL: BATTERY BACKUP 

KMI-1301

Special Features

- Electric up and down function.
- It is suitable for small animal's operation, such as sheep, dog etc.
- It is reasonable structured, tight, high performance, easy operation and has very strong practicability.
- Fully made of Premium Grade 304 Stainless Steel, it is heat-resistant, corrosion protective and rustproof.
- The surface of the table-top is V shaped and is smooth and easy to clean and disinfect, thus, it can avoid cross infection
- Equipped with fluid collecting through system.



Foot Switch (Optional)

Technical Data

Length of Table	1220mm (48")
Width of Table	610mm (24")

Standard Accessories

- IV Pole
- Drainage Pipe



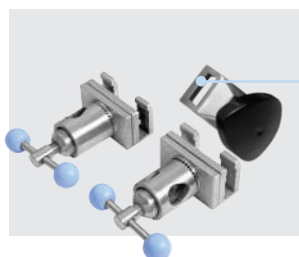
ARM REST



SHOULDER SUPPORT



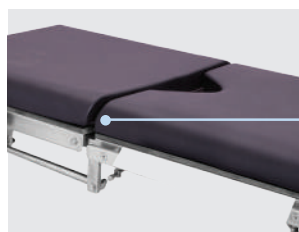
ANESTHETIC SCREEN



CLAMPS



LEG SUPPORT



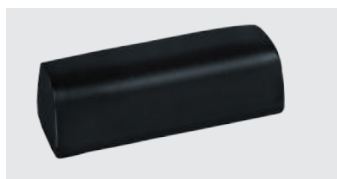
MATTRESS



SPLIT LEG SECTION
OA-1



RESTRAINT BODY STRAP
OA-2



BOLSTER PILLOW
OA-3



INSTRUMENT TRAY
OA-4



FOOT SUPPORT
OA-5



**CERVICAL IN SUPINE /
LAMINECTOMY FRAME**
OA-6



HUMERUS SUPPORT
OA-7

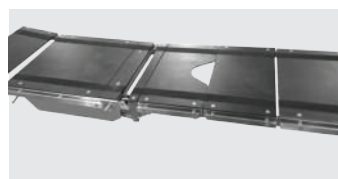
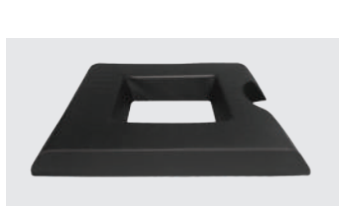


TABLE LENGTH EXTENSION
OA-8



**STEINMANN PIN
CLAMP HOLDER**
OA-9



**SPINE SURGERY USING
CUSHION SPINE FRAME**
OA-10



**ARM TRACTION DEVICE
/ PERINEAL POST**
OA-11



UROLOGY / GYNAE TRAY
OA-12



HORSE SHOE
OA-13



KNEE SUPPORT
OA-14



**FIXATOR FOR
SITTING POSITION**
OA-15



SHOULDER SURGERY
OA-16



**HAND SURGERY
TABLE**
OA-17



WIDTH EXTENSION
OA-18



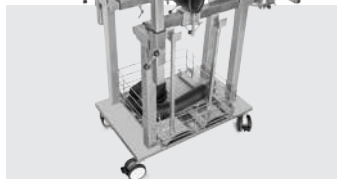
**ARTHROSCOPY
ATTACHMENT**
OA-19



WRISTLET
OA-20



X-RAY TOP
allows for inserting X-ray film
cassette from head to foot
OA-21






**ORTHOPAEDIC
ATTACHMENT STAND**
OA-22



ACCESSORIES STAND
OA-23



 **KOINAA MEDICAL EQUIPMENTS**
M-84, Sector-3, DSIIIDC Industrial Area
Bawana, Delhi-110039, India

 info@koinaamedical.com
 +91-7373-342-342, 8803-388-822

www.koinaamedical.com

Reproduction of pictures or specifications in part or full will be considered as illegal and Koinaa Medical Equipments reserves the right to initiate legal action.